

Photon User Guide

Error rendering macro 'toc'

null

Overview

Photon is the Marketcetera Automated Trading Platform UI client. Photon is what's known as a [fat client](#), meaning it is a standalone native executable as opposed to a [thin client](#), which is typically made available via a web browser. To use Photon, you must install the Photon component for your platform and architecture. See the [installation guide](#) for more information on installing Photon.

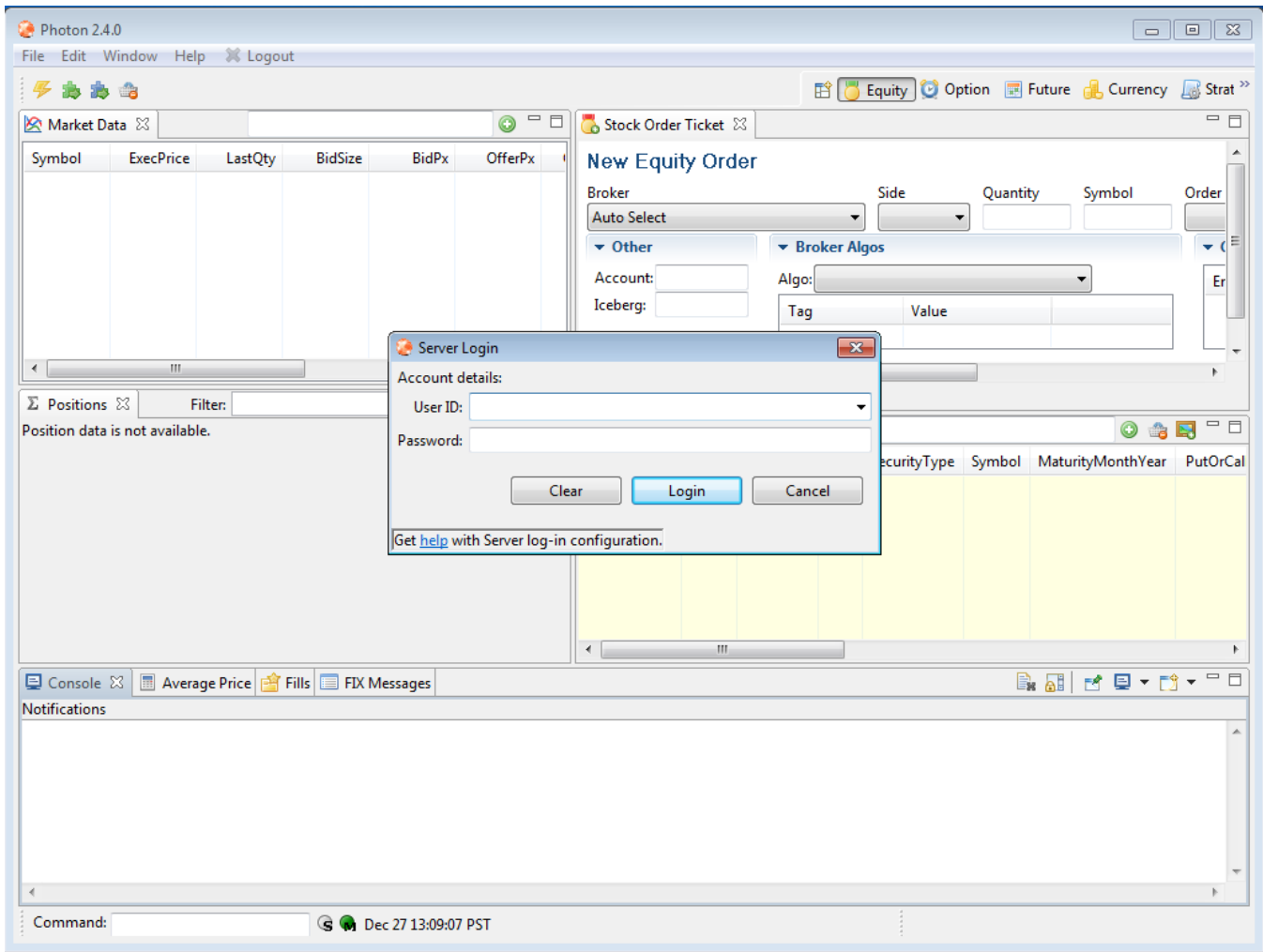
Launching Photon

Photon uses the [Eclipse Rich Client Platform](#). If you're familiar with the Eclipse IDE, Photon will look very familiar to you. On Windows, an entry for Photon will have been added to your Start menu or Desktop, as you requested during installation. On Linux, to start Photon:

```
$ cd marketcetera-2.2.1
$ ./setEnv.sh
$ cd photon
$ ./photon
```

On OSX, there is a Photon.app which you can add to your toolbar or Applications folder.

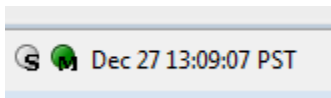
Logging In



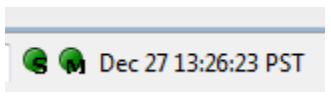
Photon can run by itself, however, most of its utility comes from connecting to other components in the Marketcetera Automated Trading Platform stack, like the Deploy Anywhere Routing Engine and one or more Strategy Engines. Upon start, Photon prompts you to log in to the Deploy Anywhere Routing Engine (DARE) in the cloud. This system is available for you to use without charge for your evaluation of Marketcetera.

The default credentials for DARE are the same credentials you used to register with Marketcetera Confluence. When you install your own DARE appliance later, you can set up your own users.

Once you've entered the credentials to connect to DARE, you can tell if Photon has successfully connected by the status icons at the bottom. The icons will change from



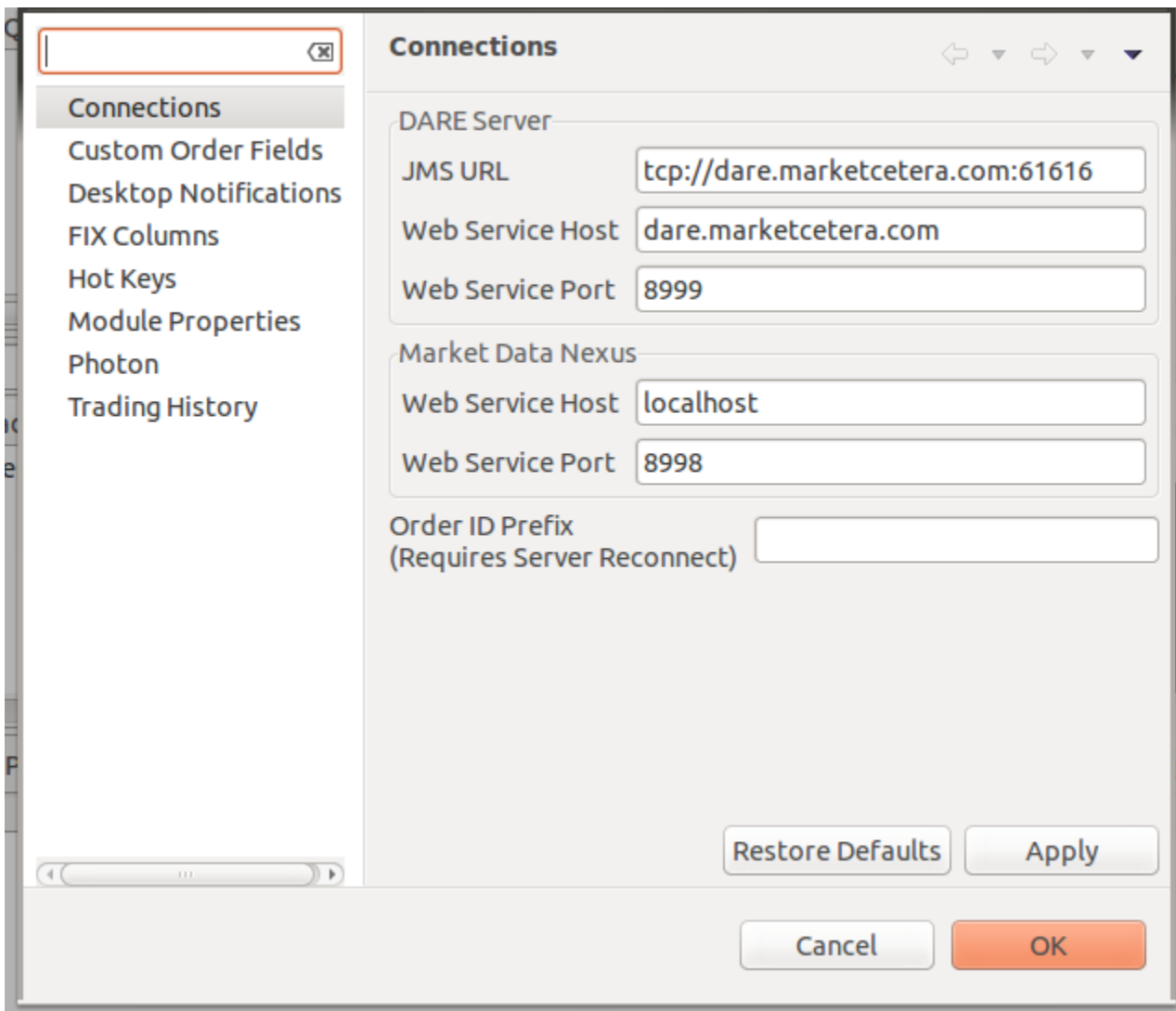
to



(the left light is for the connection to DARE, the right light is for the connection to the Market Data Nexus, more on that later)

After connecting, some views that require a connection to DARE are populated, like the Open Orders View and the Positions View. More on these and other views later.

By default, Photon is configured to connect to DARE appliance running in the cloud. However, if you have licensed a DARE appliance for your own data center, you can configure Photon to connect to that host instead. Select Cancel from the login dialog and then Edit->Preferences. Select Connections in the left pane.



You can enter a new IP address (in place of dare.marketcetera.com) for the IP address of your DARE appliance. Select OK and then File->Reconnect Server to resume the login process. There is also a menubar icon for Reconnect Server, for your convenience. If you are already connected to the server when you select Reconnect Server, your current connection will be closed and a new connection established. This is harmless, though there may be a small delay depending on the amount of trading activity that's occurred today as Photon downloads today's activity from DARE.

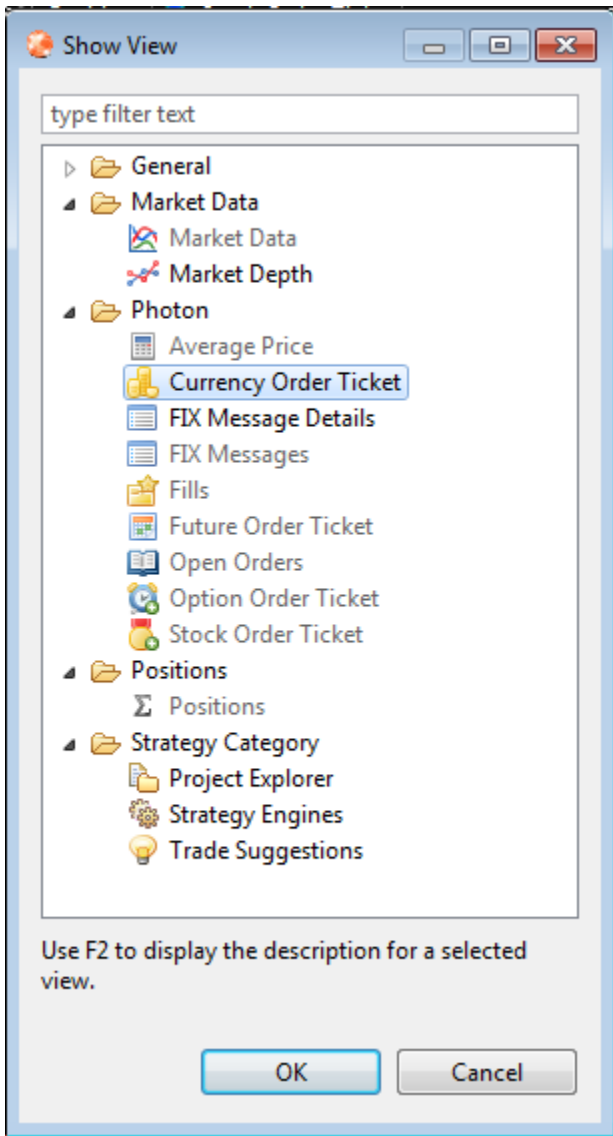
In addition to the DARE Server connection, there is also a connection to the Market Data Nexus. By default, Photon is expecting a Market Data Nexus installation on your local host. The Strategy Engine installation by default is configured to also provide a Market Data Nexus instance. The default port is 8998 for the Market Data Nexus.

Perspectives

A Perspective in Photon is a collection of Views that combine to provide a workspace with a specific business function. Perspectives in Photon include Equity, Option, Future, Currency, and Strategy. You can also create your own Perspectives with a workflow that makes sense to you. Modifications to Perspectives, including opening, resizing, moving, or closing Views, will be remembered next time you open Photon.

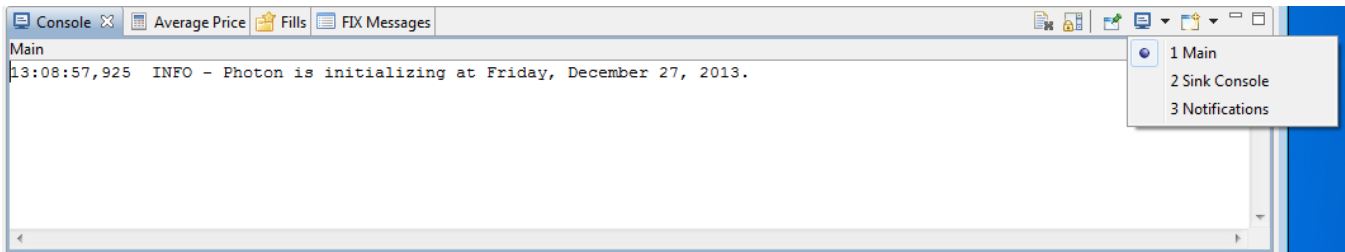
Views

A View in Photon is one of the dockable and resizeable tabs with a title and a menubar. Views may be maximized, minimized, closed, and moved. In addition to some common Eclipse Views, Photon provides custom Views. Several Views are associated with each Perspective. Additional Views may be opened by selecting Window->Open View:

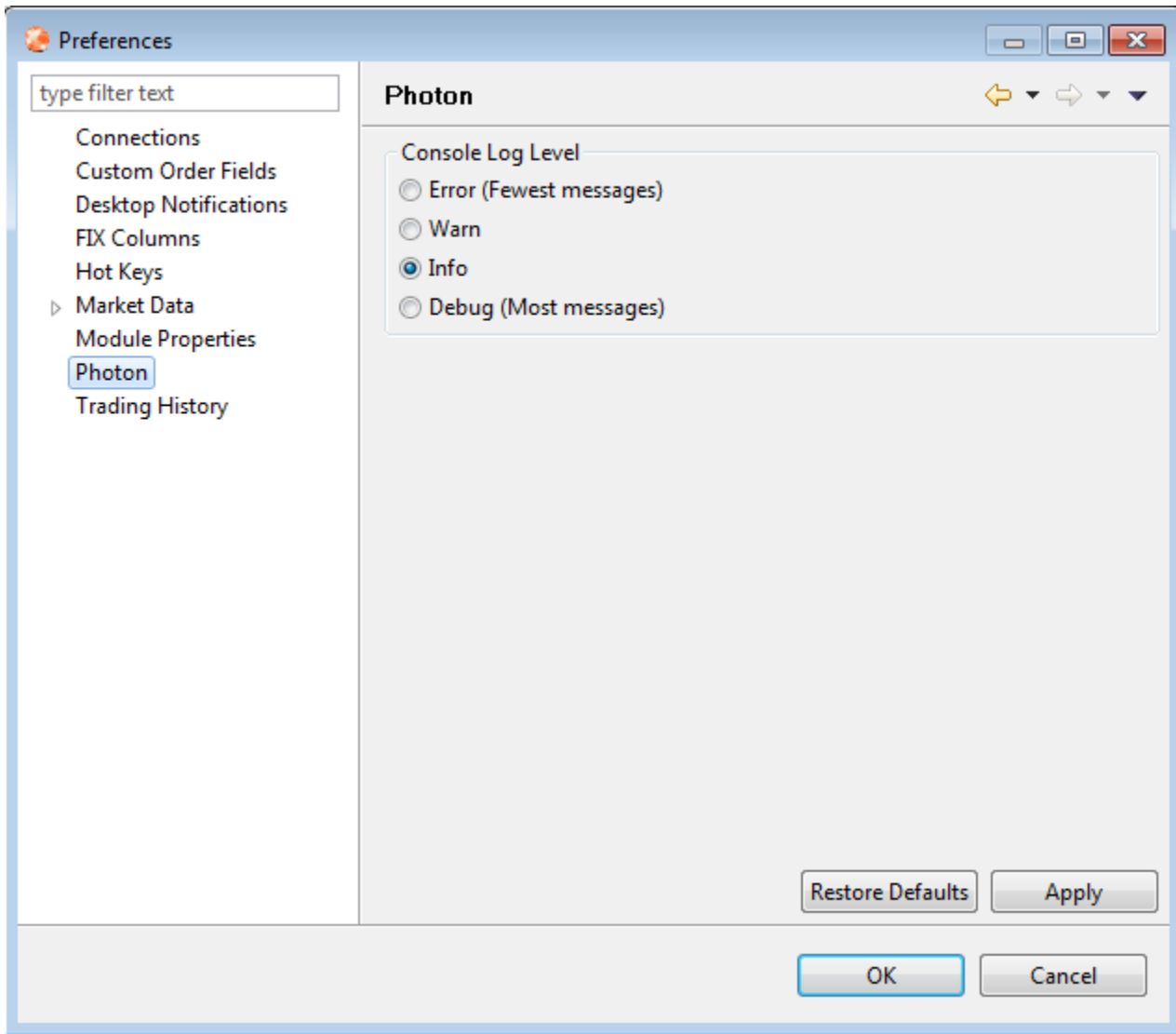


Console View

The Console View is a standard Eclipse View with some Photon-specific customizations.



There are three sub-views: Main, Sink Console, and Notifications. The Main Console provides basic information from Photon. The default message level is INFO. This can be changed at Edit->Preferences->Photon.



The Sink Console displays messages from connected Strategy Agents. There aren't any Strategy Agent connections yet, more on that later.

The Notifications Console displays messages from Photon that correspond to pop-up messages, like server disconnect and reconnect messages, for example.

Market Data View

Photon provides market data via the Market Data Nexus for display and P&L calculation. Let's take a look at the display of market data. The Marketcetera Automated Trading Platform divides market data into content types:

- Top of Book - best bid and offer
- Latest Tick - most recent trade
- Marketstat - statistics, including OHLC (open price, high price, low price, and close price)
- [NASDAQ Level 2 \(NQDS\)](#) - top-of-book for NASDAQ exchange participants
- [NASDAQ TotalView \(ITCH\)](#) - full order book depth for NASDAQ market participants
- [NYSE OpenBook](#) - limit-order book for all NYSE-traded securities
- Aggregated Depth - generic depth data with order sizes aggregated at each price level
- Unaggregated Depth - generate depth data no price level aggregation

In Photon, top-of-book, latest tick, and marketstat are displayed in the Market Data View:

Symbol	ExecPrice	LastQty	BidSize	BidPx	OfferPx	OfferSize	PrevClosePx	OpenClose	HighPx	LowPx	TradeVolume
METC	85.17	1105	905	85.17	85.18	7593	84.45	75.46	95.46	73.84	573
RICK	83.76	1308	5911	83.76	83.77	7018	90.43	85.49	86.47	83.23	49333
BZ-201304	31.44	1148	2770	31.44	31.45	2550	31.57	25.51	32.53	22.40	28234

To display market data in the Market Data View, enter a symbol in the Market Data View menubar and press the green plus button or press enter. The symbol you enter will be submitted to all the active market data adapters. Each adapter will interpret the symbol according to its nature and return market data accordingly. If more than one market data adapter is active and returning data for the same symbol, the market data displayed will come from the most recently supplied market data event. Note that, in the above image, there are two equities and one future instrument displayed. Market data can be displayed for multiple instruments at the same time.

It is important to note that Marketcetera, Inc. does not itself supply market data. Market data comes to the platform via a market data adapter from an external source, like Thompson Reuters or Lime. You will need an account with one of these providers in order to view market data. More on market data adapters later.

If the market data event displayed in the Market Data View comes from a market data adapter that supports depth-of-book, you can select a row in the Market Data View and open the Market Depth View.

Symbol	ExecPrice	LastQty	BidSize	BidPx	OfferPx	OfferSize	PrevClosePx	OpenClose	HighPx	LowPx	TradeVolume
METC	85.09			85.09	85.10	2146	92.42	85.18	96.03	84.37	32899
RICK	83.86			83.86	83.62	4754	84.38	78.22	91.27	75.82	41445
BZ-201	31.20			31.20	31.21	5833	38.47	24.64	36.15	21.99	36339

The available depth views are displayed in the right-click menu for a given row in the Market Data View. Selecting one of the available market data depth types will open the Market Depth View.

Time	MPID	Size	Bid Price	Ask Price	Size	MPID	Time
16:08:42	BGS2	6727	85.2	85.08	8233	BGS3	16:08:41
16:08:44	BGS2	1495	85.2	85.08	3673	BGS3	16:08:43
16:08:48	BGS2	8559	85.2	85.08	4053	BGS3	16:08:45
16:08:37	BGS2	4657	85.2	85.08	5825	BGS3	16:08:49
16:08:49	BGS2	9965	85.2	85.08	1286	BGS3	16:08:51
16:08:36	BGS2	2841	85.2	85.09	4757	BGS3	16:08:42
16:08:50	BGS2	7768	85.2	85.09	460	BGS3	16:08:46
16:08:52	BGS2	3955	85.2	85.09	4169	BGS3	16:08:48
16:08:51	BGS1	1718	85.2	85.09	2223	BGS3	16:08:52

You can select buy or sell from the right-click menu from either the Market Data or the Market Depth Views. Doing so will open the appropriate Order Ticket View populated with the bid or ask from the selected row depending on whether you selected buy (ask) or sell (bid).

Order Ticket Views

The Order Ticket Views are used to place new orders and cancel replace order requests. There is a specialized Order Ticket View for each supported asset class.

Field	Type	Required	Default	Equity	Option	Future	Currency	Message Field
Broker	Dropdown	Yes	Auto Select	Yes	Yes	Yes	Yes	Special ¹
Side	Dropdown	Yes		Yes	Yes	Yes	Yes	Side (54)
Quantity	Decimal	Yes		Yes	Yes	Yes	Yes	OrderQty (38)
Symbol	String ²	Yes		Yes	Yes	Yes	Yes	Symbol (55)
Order Type	Dropdown	Yes		Yes	Yes	Yes	Yes	OrdType (40)
Price	Decimal	Conditional ³		Yes	Yes	Yes	Yes	Price (44)
TIF	Dropdown	Yes	Day	Yes	Yes	Yes	Yes	TimeInForce (59)
Account	String	No		Yes	Yes	Yes	Yes	Account (1)
Iceberg	Decimal	No		Yes	Yes	Yes	Yes	MaxFloor (111)
Algo	Dropdown	No		Yes	Yes	Yes	Yes	Varies ⁴
Custom Fields	Table	No		Yes	Yes	Yes	Yes	Varies ⁵
Expiration Year	Number: YYYY	Future		No	No	Yes	No	MaturityMonthYear (200)
Expiration Month	Dropdown	Future		No	No	Yes	No	MaturityMonthYear (200)
Expiry	Number: YYYYMMDD	Option		No	Yes	No	No	MaturityMonthYear (200), MaturityDay (205)
Strike	Decimal	Option		No	Yes	No	No	StrikePrice (202)
Type	Dropdown	Option		No	Yes	No	No	PutOrCall (201)
Open/Close	Dropdown	No		No	Yes	No	No	OpenClose (77)
Capacity	Dropdown	No		No	Yes	No	No	OrderCapacity (528)
Near Tenor	Number: YYYYMMDD	No		No	No	No	Yes	FutSettDate (64)
Far Tenor	Number: YYYYMMDD	No		No	No	No	Yes	SettDate2 (193)
Base Currency	Radio Button	Yes	CCY1	No	No	No	Yes	Special ⁶

1. The list of available brokers is provided by the Order Routing System. An order may be targeted to a specific broker or the default or "auto-selected" broker may be selected.
2. The symbol entered is provided to the broker as-is. There is no official symbology for instruments that is respected by all brokers, exchanges, and market data providers. Some providers accept numeric codes, others use OSI for options, and others use proprietary symbology. This is exacerbated by symbology of market data providers. In the next major release, the Marketcetera Automated Trading Platform will provide a symbol standardization system that will make this easier to manage. For now, keep in mind that the symbol in the order ticket has to be something understood by the broker to which you send the order.
3. Price is required for non-market orders
4. The algo dropdown and table allows you to target an order to a broker-specified algorithm. These algorithms are defined in the Order Routing System configuration. For example, the broker may offer a special VWAP or TWAP algorithm with parameters that specify participation or start and end times. These algorithm specifications are part of the broker configuration provided by Marketcetera, Inc. to subscription customers. For non-subscription customers, you may research and define these algorithms yourself depending on what your broker offers.
5. The custom fields table allows you to specify FIX fields and values on outgoing orders that are not covered by existing widgets on the order ticket.
6. Specifies whether to use the left currency as the base or the right. For example, for the symbol, USD/EUR, CCY1 is USD and CCY2 is EUR. You may swap these by setting the radio button value to CCY2.

Each asset class has its own Order Ticket View. The Future Order Ticket View is shown here.

Market Data | Market Depth | Future Order Ticket | Positions

New Future Order

Broker: Side: Quantity: Symbol: Order Type: Price: TIF:

ExpirationYear: ExpirationMonth:

Other

Account:

Iceberg:

Broker Algos

Algo:

Tag	Value

Custom fields

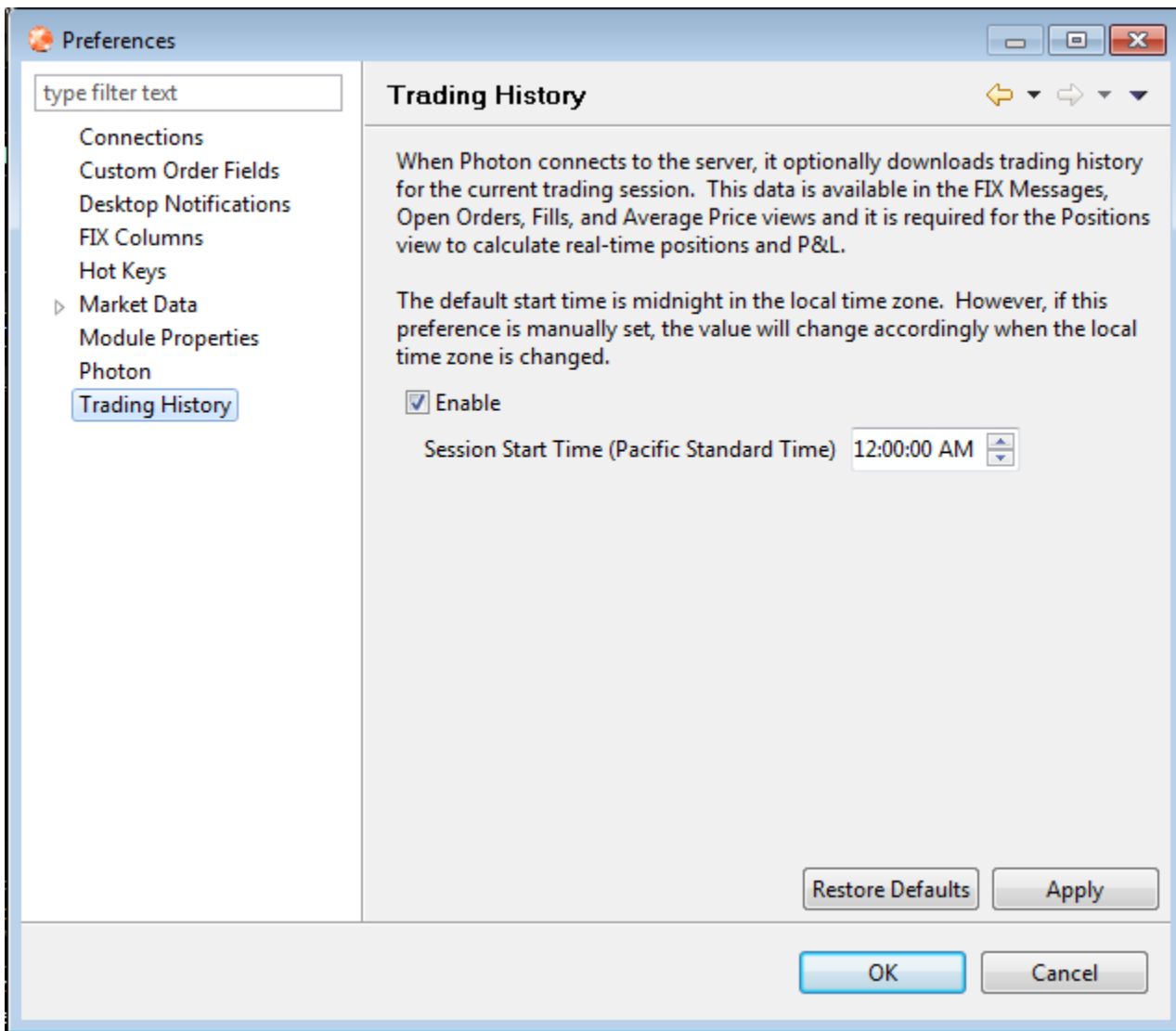
Enabled/Key	Value

OK

FIX Message Views

Trading History

The FIX Message Views are based on FIX message history provided by DARE. Each FIX message received by DARE from brokers and exchanges contributes to the FIX message history. That can be a lot of messages! The Marketcetera Automated Trading System has the ability to filter the FIX message history to just those orders from the current trading session. By default, this feature is enabled and the session start time is set to 00:00:00, local time. To disable this feature (download all message history) or change the session start time, go to Edit->Preferences->Trading History:








This feature affects all Views that are based on FIX messages except the Positions View and Open Orders View, which obey special rules. If you change the Trading History settings, they will take effect the next time you start Photon or you Reconnect to the Server.

FIX Messages Menu

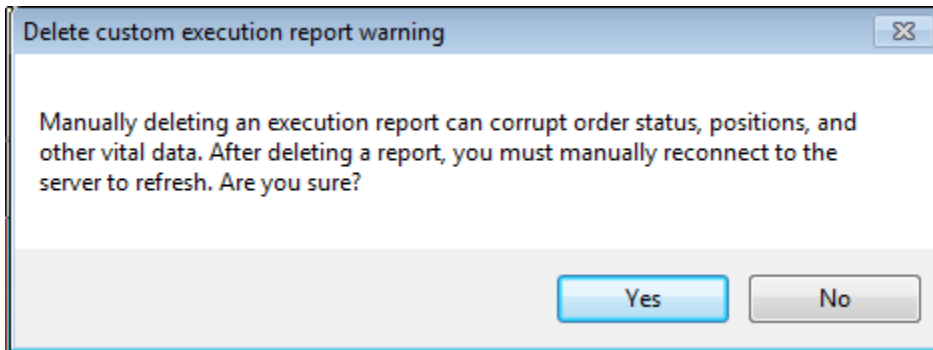
All FIX Message Views offer the same right-click and toolbar menus. To activate the FIX Messages Menu, right-click on a row in one of the FIX Messages Views.

TransactTime	SendingTime	MsgType	OrdID	OrigOrdID	OrdStatus	Side	SecurityType	Symb
15:54:28	15:54:28	Executi...	138...		NEW	B	EQ	AAPL
15:55:33	15:55:33	Executi...	2002	1388178...	CANCELED	B	EQ	AAPL
15:55:48	15:55:48	Executi...	2001		NEW	B	EQ	AAPL
15:56:08	15:56:08	Executi...	2003		FILLED	S	EQ	AAPL
15:56:42	15:56:42	Executi...	2004		FILLED	S	EQ	AAPL
15:56:59	15:56:59	Executi...	2005		PARTIAL	S	EQ	AAPL

-  Delete report
-  View FIX message details
-  Replace order
-  Cancel order
-  Copy

Delete Report Menu

Selecting this menu item causes the corresponding report to be permanently deleted. You should not do this unless there's a very good reason, like a bad execution report from an exchange or broker. But, really, you shouldn't do this. Feel free to be intimidated by this message if you do:



View FIX Message Details Menu

This selection opens or refreshes the FIX Message Details View.

Replace Order Menu

This selection opens the Order Ticket View appropriate for the instrument in the message and formats all the fields from the message in order to prepare an order cancel replace request. This menu item is enabled for open orders only. Note that fields that cannot change in an order cancel replace are disabled.

Replace Equity Order

Broker: Primary Broker (broker1) | Side: Sell | Quantity: 100 | Symbol: AAPL | Order Type: Limit | Price: 560.76 | TIF: Day

Other: Account: | Iceberg: |

Broker Algos: Algo: |

Tag	Value

Custom fields:

Enabled/Key	Value

Buttons: Send, Clear, OK

Cancel Order Menu

This selection sends an order cancel request based on the given message. This menu item is enabled for open orders only. No confirmation is required; the cancel request is immediately sent.

Copy Menu

This selection copies a text version of the given message to the system clipboard.

FIX Messages Toolbar

All FIX Messages Views provide the same widgets in the View toolbar.

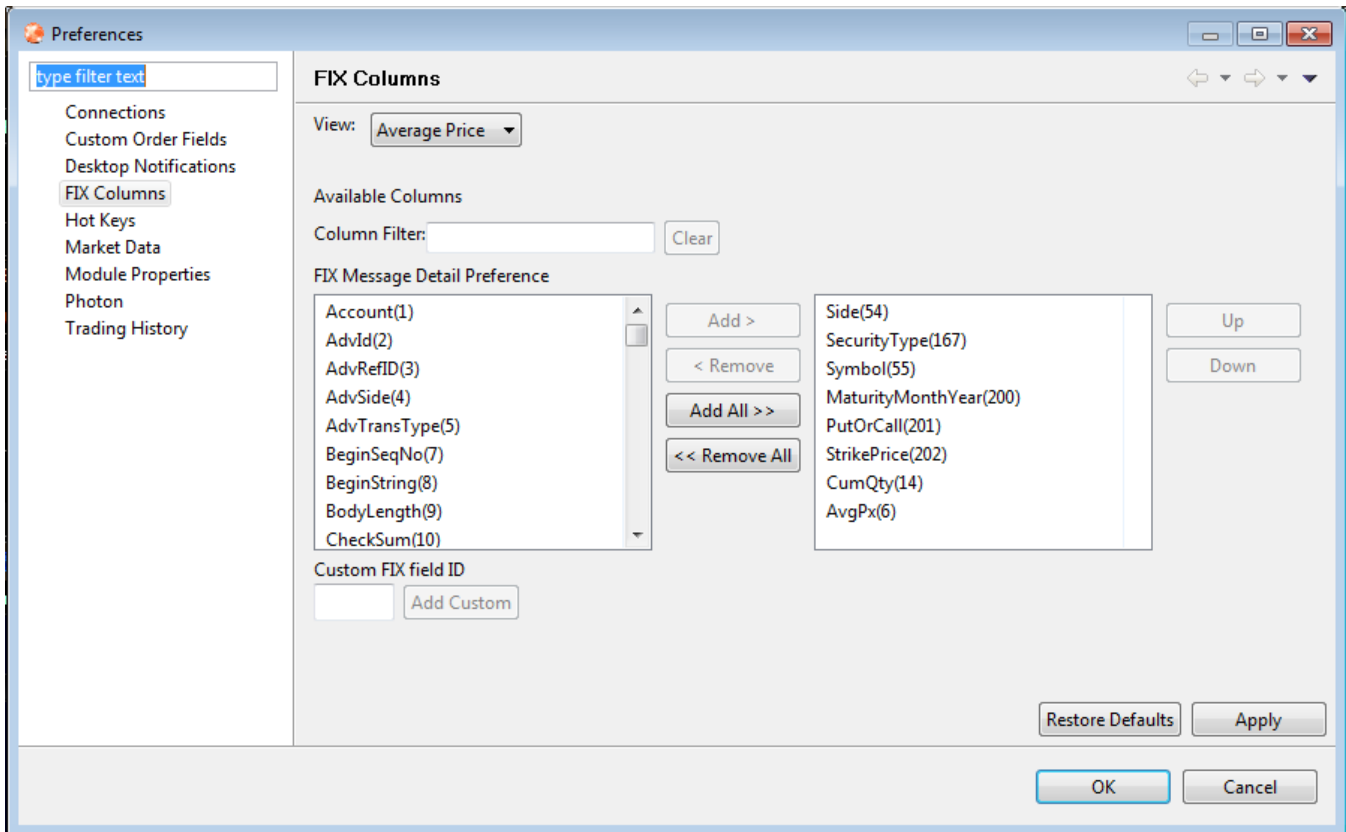
Filter Toolbar

Filter: Symbol~=A*PL

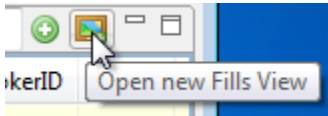
OrdID	OrdStatus	Side	SecurityType	Symbol	MaturityMonthYear	PutOrCall	StrikePrice	OrderQty	CumQty	LeavesQty	OrderPrice	AvgPx	Account	LastQty	ExecPrice	Exch	BrokerID	Trader
2003	FILLED	S	EQ	AAPL				100	100	0	559.95	1		100			broker1	admin
2004	FILLED	S	EQ	AAPL				100	100	0	560.75	1		100			broker1	admin
2005	PARTIAL	S	EQ	AAPL				100	61	39	560.76	1		61			broker1	admin

Rows can be filtered with a regular expression based on the column names and values. For example, in the FIX Messages View above, both "Symbol=AAPL" and "Symbol~=A*PL" would yield the same results. Note the usage of "~=" instead of "=" to activate the regular expression filter.

FIX messages can be sorted by any of the columns. Columns can be dragged to change the column order. You can change the columns displayed in each FIX Messages View by selecting Edit->Preferences->FIX Columns.



New View Toolbar



Multiple Views of the same type can be opened by selecting the "picture frame" icon. Each View can have different column orders and filter settings.

FIX Message Permissions

All FIX Messages Views rely on FIX Messages as their input, either from the server database or incoming from the message bus. The messages that are visible are based on the current user. If the current user is a superuser, all messages are visible. If the current user is not a superuser, messages for the current user only are visible.

FIX Messages View

The FIX Messages View shows all FIX messages in the trading history. Messages from previous trading history sessions are not displayed.

TransactTime	SendingTime	MsgType	OrdID	OrigOrdID	OrdStatus	Side	SecurityType	Symbol	MaturityMonthYear	PutOrCall	StrikePrice	OrderQty	CumQty	LeavesQty	OrdType	OrderPrice	AvgPx	Account	LastQty	ExecPrice	Exch	ExecID	BrokerOrdID	RefSeqNum	Br
15:54:28	15:54:28	Executi...	138...	1388178...	NEW	B	EQ	AAPL				100	0	100	LMT	560.09	0		0	0		68708	68707		br
15:55:33	15:55:33	Executi...	2002		CANCELED	B	EQ	AAPL				100	0	0	LMT	560.09	0		0	0		68709	68707		br
15:55:48	15:55:48	Executi...	2001		NEW	B	EQ	AAPL				100	0	100	LMT	560.09	0		0	0		68711	68710		br
15:56:08	15:56:08	Executi...	2003		FILLED	S	EQ	AAPL				100	100	0	LMT	559.95	1		100			68714	68712		br
15:56:42	15:56:42	Executi...	2004		FILLED	S	EQ	AAPL				100	100	0	LMT	560.75	1		100			68717	68715		br
15:56:59	15:56:59	Executi...	2005		PARTIAL	S	EQ	AAPL				100	61	39	LMT	560.76	1		61			68720	68718		br

FIX Message Details View

The FIX Message Details View shows a tag-by-tag view of a single FIX message. To activate the FIX Message Detail View, select a FIX message in any of the FIX Message Views and right-click. From the pop-up menu, select View FIX message details.

Field	Tag	Value	Value Name	Required
BeginString	8	FIX.4.2		false
BodyLength	9	208		false
MsgSeqNum	34	12		false
MsgType	35	8	ExecutionReport	false
SenderCompID	49	MRKTC-EXCH		false
SendingTime	52	Fri Dec 27 15:56:59 PST 2013		false
TargetCompID	56	240w-cd-win64-240		false
AvgPx	6	1		true
ClOrdID	11	2005		false
CumQty	14	61		true
ExecID	17	68720		true
ExecTransType	20	0	NEW	false
LastQty	32	61		false

Full message:

```
8=FIX.4.2 9=208 35=8 34=12 49=MRKTC-EXCH 52=20131227-23:56:59.137 56=240w-cd-win64-240 6=1 11=2005 14=61 17=68720 20=0 32=61 37=68718 38=100 39=1 40=2 44=560.76 54=2 55=AAPL 59=0 60=20131227-23:56:59.137 150=1 151=39 167=CS 10=241
```

The message can be copied to the system clipboard, either as a text string or a table. Selecting a different row (left-click or right-click) in any of the FIX Message Views will automatically display the selected message in the FIX Message Details View.

Fills View

The Fills View shows order fills from today's trading session. Like other FIX Message Views, the Fills View supports multiple instances using the picture frame icon and filtering with regular expressions.

OrdID	OrdStatus	Side	SecurityType	Symbol	MaturityMonthYear	PutOrCall	StrikePrice	OrderQty	CumQty	LeavesQty	OrderPrice	AvgPx	Account	LastQty	ExecPrice	Exch	BrokerID	Trader
2003	FILLED	S	EQ	AAPL				100	100	0	559.95	1		100			broker1	admin
2004	FILLED	S	EQ	AAPL				100	100	0	560.75	1		100			broker1	admin
2005	PARTIAL	S	EQ	AAPL				100	61	39	560.76	1		61			broker1	admin

Average Price View

The Average Price View shows the average price of all fills from the current session per instrument.

Side	SecurityType	Symbol	CumQty	AvgPx
S	EQ	AMZN	100	550.0000
S	EQ	DELL	100	57.8400
S	FOREIGN EXCHANGE CONTRACT	USD/JPY	100	98.3050

Positions View

The Positions View shows all positions visible to the current user. The Positions View is partially based on FIX Messages and partially on persisted database state. Similarly to the FIX Messages Views, the contents of the Positions View are regulated by the permissions of the current user. If the current user is a superuser, all positions are visible. If the current user is not a superuser, only the current user's positions are visible. Flat and grouped layouts are available. Select the layout with the Positions View Toolbar icons.

Underlying	Account	Trader Id	Instrument	Root	Expiry	Contract T...	Strike	Position	Incoming	Position PL	Trading PL	Realized PL	Unrealized ...	Total PL
AAPL	acc1	admin	EQ	NA	NA	NA	NA	-100.00	-100.00	-63.00	0.00	0.00	-63.00	-63.00
DELL	acc2	admin	EQ	NA	NA	NA	NA	-100.00	0.00	0.00	1291.00	0.00	1291.00	1291.00
ORCL	acc2	admin	EQ	NA	NA	NA	NA	-100.00	0.00	0.00	5033.00	0.00	5033.00	5033.00

Positions View Flat Layout

Underlying	Account	Trader Id	Instrument	Root	Expiry	Contract T...	Strike	Position	Incoming	Position PL	Trading PL	Realized PL	Unrealized ...	Total PL
AAPL	acc1	admin	EQ	NA	NA	NA	NA	-100.00	-100.00	-911.00	0.00	0.00	-911.00	-911.00
DELL	acc2	admin	EQ	NA	NA	NA	NA	-100.00	0.00	0.00	1298.00	0.00	1298.00	1298.00
ORCL	acc2	admin	EQ	NA	NA	NA	NA	-100.00	0.00	0.00	5076.00	0.00	5076.00	5076.00

Positions View Grouped Layouts

Flat Layout

Underlying	Account	Trader Id	Instrument	Position	Incoming	Position PL	Trading PL	Realized PL	Unrealized ...	Total PL
AAPL	acc1	admin	EQ	-100.00	0.00	0.00	3360.94	0.00	3360.94	3360.94
DELL	acc2	admin	EQ	-100.00	0.00	0.00	1264.00	0.00	1264.00	1264.00
ORCL	acc2	admin	EQ	-100.00	0.00	0.00	5074.00	0.00	5074.00	5074.00

The Positions View default layout is the flat non-grouped view.

Grouped Layouts

The Positions View offers several grouped layouts:

- Underlying, Account
- Underlying, Trader
- Account, Underlying
- Account, Trader
- Trader, Underlying
- Trader, Account

The grouped layouts sort the positions into groupings of underlying (instrument), account, and trader. You select the first two by which to group, the third is selected by default.

Grouping	Instrument	Root	Expiry	Contract T...	Strike	Position	Incoming	Position PL	Trading PL	Realized PL	Unrealized ...	Total PL
▾ acc1						-100.00	-100.00	-163.00	0.00	0.00	-163.00	-163.00
▾ acc2						-200.00	0.00	0.00	6340.00	0.00	6340.00	6340.00
▾ DELL						-100.00	0.00	0.00	1299.00	0.00	1299.00	1299.00
▾ admin						-100.00	0.00	0.00	1299.00	0.00	1299.00	1299.00
DELL	EQ	NA	NA	NA	NA	-100.00	0.00	0.00	1299.00	0.00	1299.00	1299.00
▾ ORCL						-100.00	0.00	0.00	5041.00	0.00	5041.00	5041.00

Position P&L

Profit and Loss (P&L) information is calculated for positions in the Position View. In addition to (total/current) Position, there is also a column for Incoming Position. The Incoming Position is the position held at the start of the [current trading session](#). Total Position shows the Incoming position plus any position changes from today.

There are 5 P&L columns:

- Position PL
- Trading PL
- Realized PL

- Unrealized PL
- Total PL

P&L is calculated based on the active market data feed. The active market data feed must support LATEST_TICK and MARKETSTAT to enable P&L. If the active market data feed does not support these content types, is unable to deliver the content, or the content is unavailable, P&L will be displayed as N/A instead.

Open Orders View

The Open Orders View displays all open orders visible to the current user. As in other FIX Message Views, if the current user is a superuser, all open orders are visible, otherwise, the open orders of only the current user are visible. Open orders are visible regardless of the trading history setting. In other words, open orders from previous trading sessions will always be displayed.

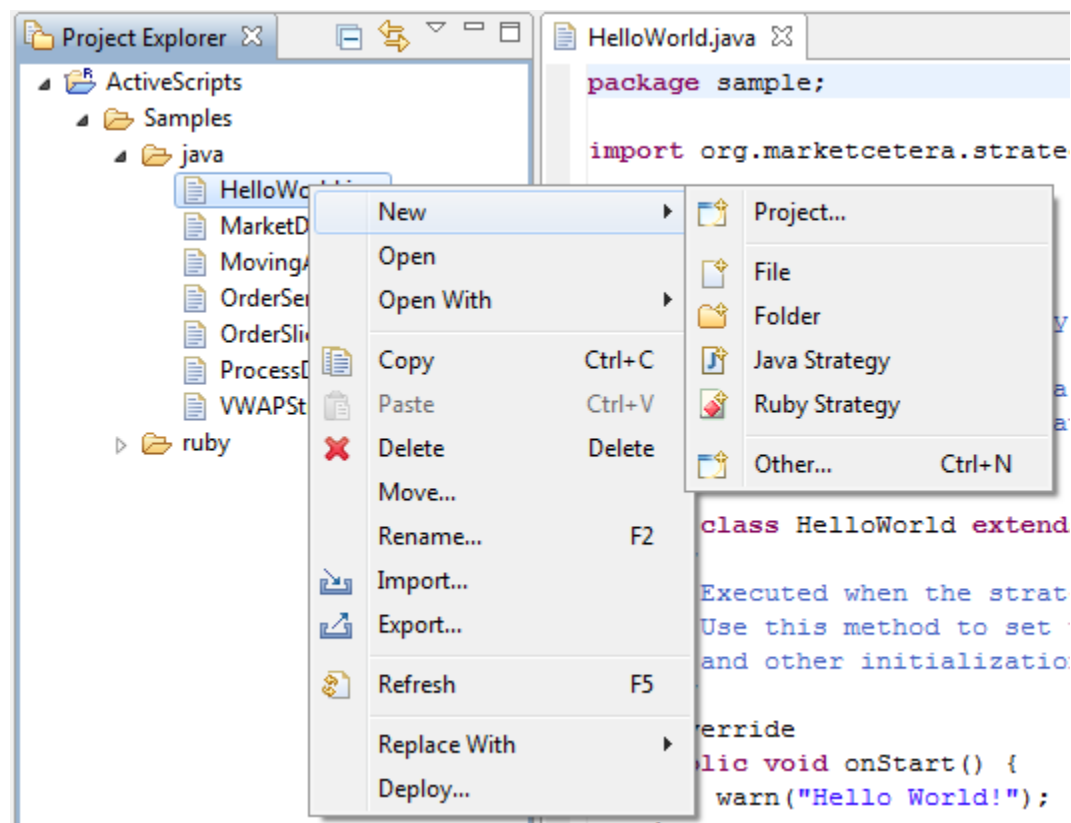
SendingTime	OrdID	OrdStatus	Side	SecurityType	Symbol	OrderQty	CumQty	LeavesQty	OrderPrice	AvgPx	Account	LastQty	BrokerID	Trader
12:46:17	4002	NEW	B	EQ	METC	100	0	100	128.3	0	acct1	0	broker1	admin
12:46:40	138...	NEW	B	FOREIGN EX...	USD/...	100	0	100	765.09	0		0	broker1	admin

Strategy Views

The Strategy Views present information related to the creation and execution of strategies. Strategies can be executed in a Strategy Engine. There is a Strategy Perspective that opens the standard set of Strategy Views. Strategy Views can be opened in any other perspective as desired by selecting the view from Window->Open View->Other.

Project Explorer View

The Project Explorer View is a standard Eclipse View. It shows strategies available to be deployed in a folder tree.



Use the Project Explorer View to create new strategies or deploy existing ones to be executed. More on creating and deploying strategies later.

Editor View

The Editor View provides a context and syntax-aware development environment for Java and Ruby strategies. Strategies can be created in this editor or in external IDE editors and imported.

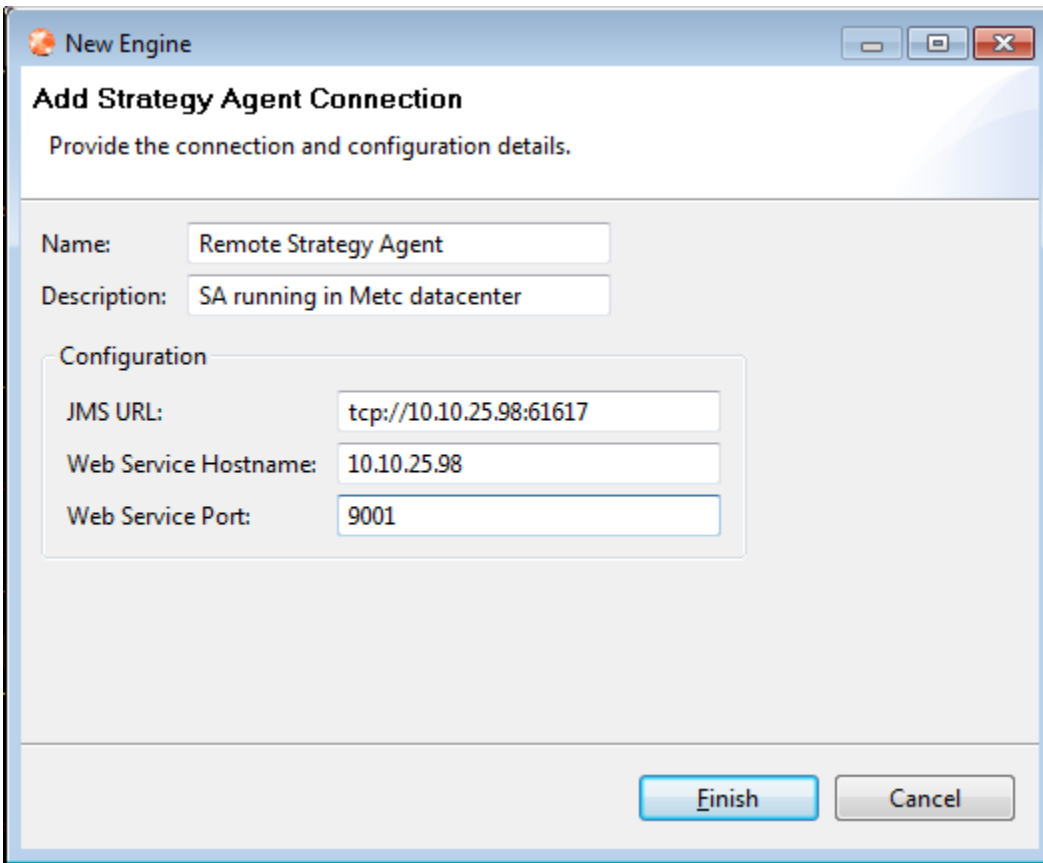
Outline View

The Outline View shows the method names and some other information about the strategy in the active Editor View.

Strategy Engines View

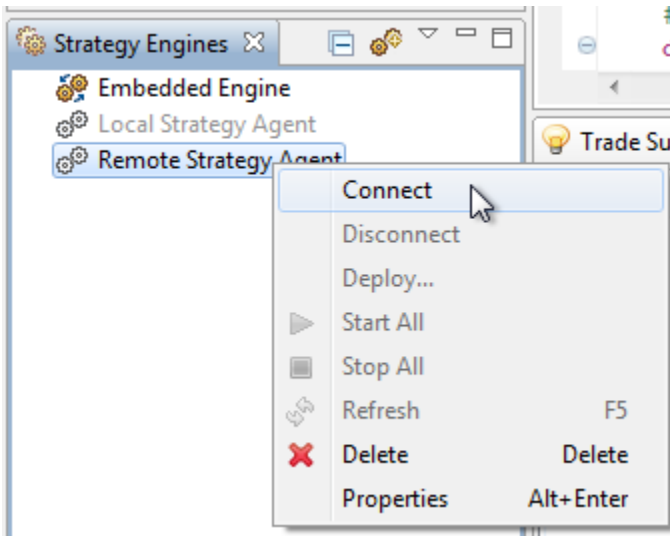
The Strategy Engines View allows you to manage connections to external Strategy Engines. A Strategy Engine can run both Java and Ruby strategies. The Strategy Engines View displays all known Strategy Engines. Enabled Engines are connected and live. Disabled Engines are not currently connected.

To create a new Strategy Engine, select the "create" icon from the Strategy Engines View.

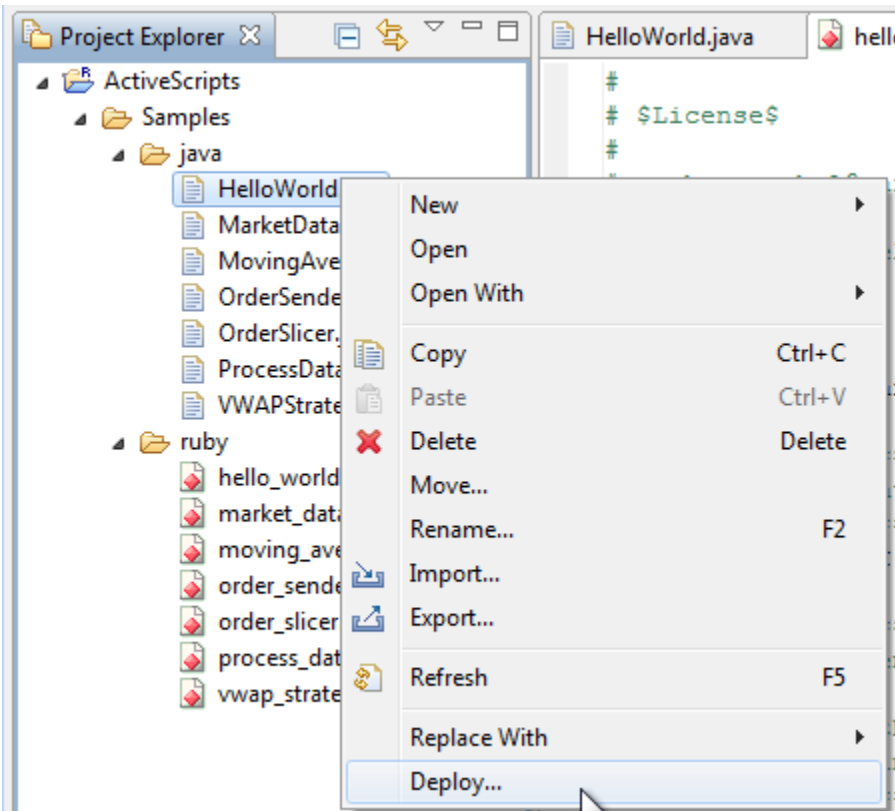


The Strategy Engine connection must match an installed Strategy Engine instance. More on installing Strategy Engines elsewhere.

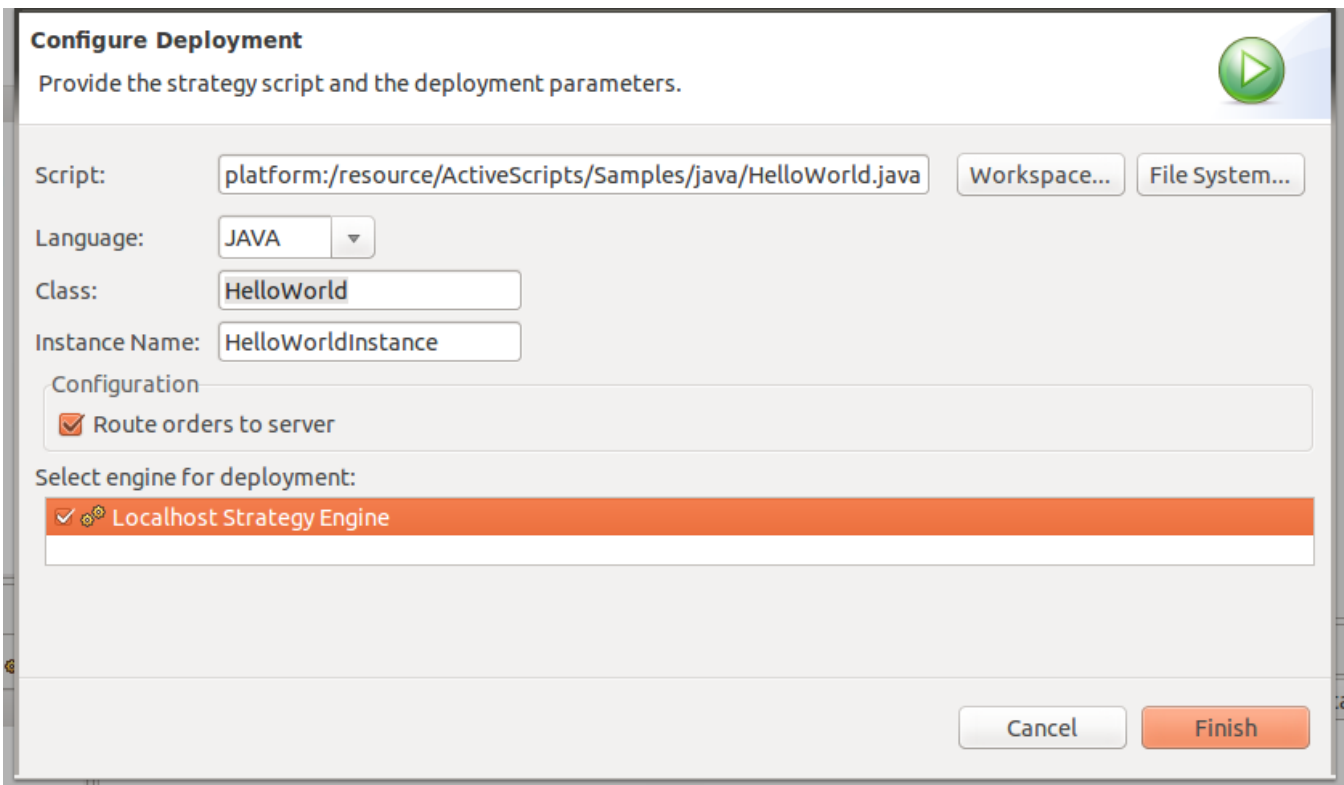
After creating the Strategy Engines, select it in the Strategy Engines View and connect to it.



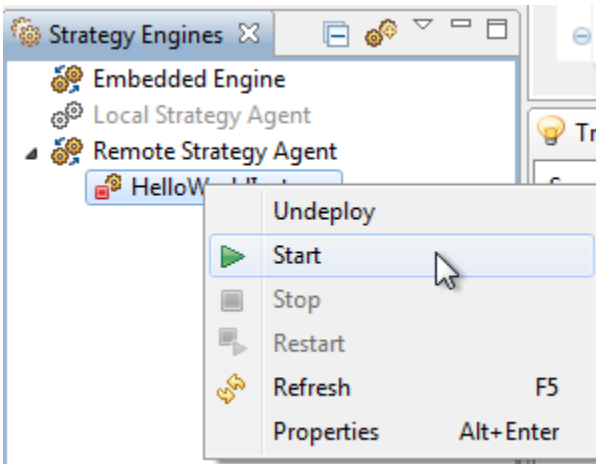
After you connect to the Strategy Engine, you can deploy, undeploy, start, and stop strategies running on that Strategy Engine. To deploy a strategy to a Strategy Engine, select the strategy in the Project Explorer View. You can deploy one of the sample strategies to start with. Later on, you can create your own.



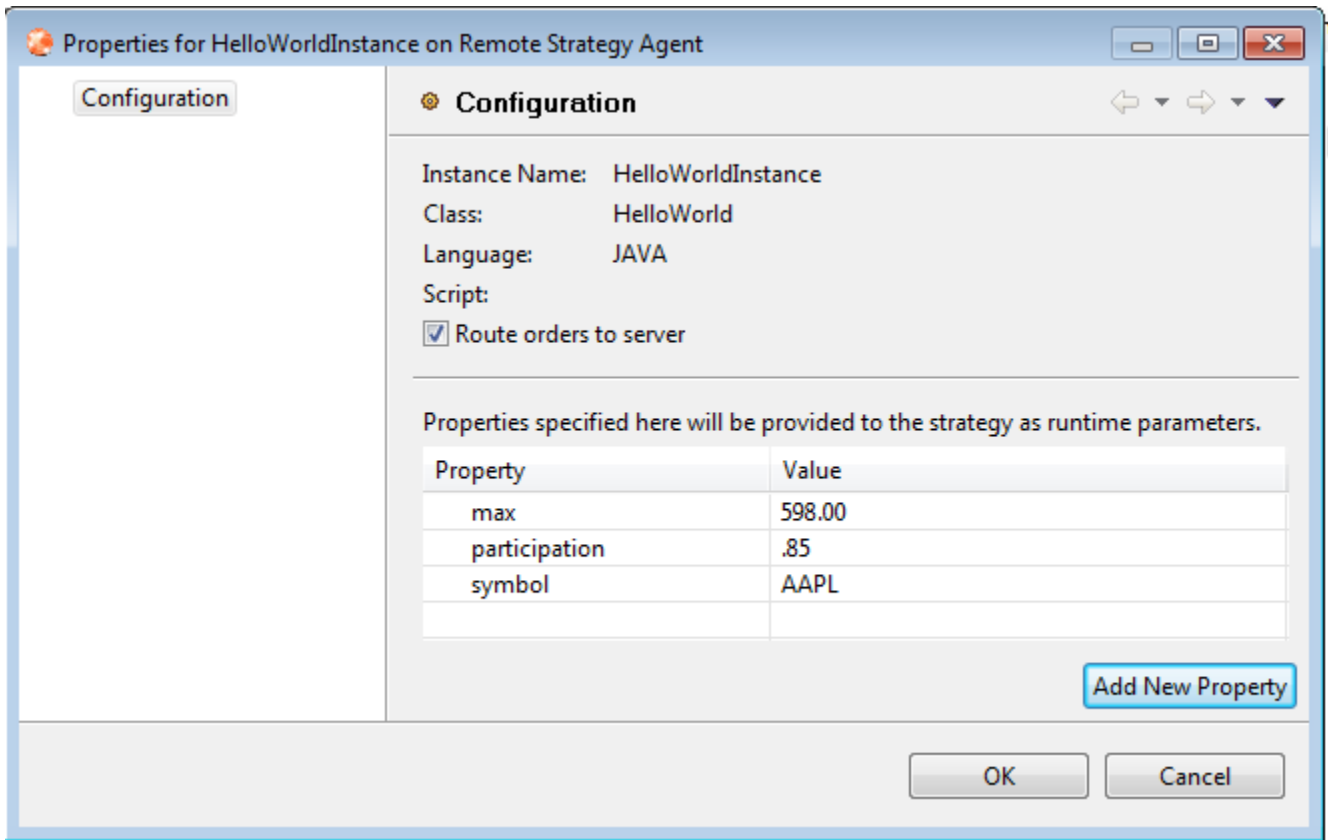
To deploy a strategy, give the strategy a unique Instance Name. You can deploy several versions of the strategy on the same Strategy Engine, but each strategy must have a unique Instance Name. Choose whether the strategy should route its orders to the server or not. If you choose not to route orders to the server, when you run the strategy, it will create orders but these orders will not be sent. You can use this as a verification step before committing the strategy to running in production. Choose the engine to which to deploy the strategy.



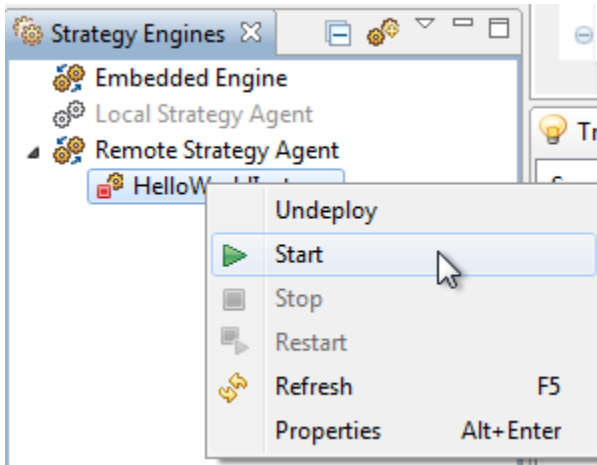
After the strategy is deployed, you can start, stop, and undeploy it from the Strategy Engines View.



Some strategies accept strategy parameters. You can pass a set of key/value pairs to the strategy by selecting Properties from the Strategy Engines View popup menu.

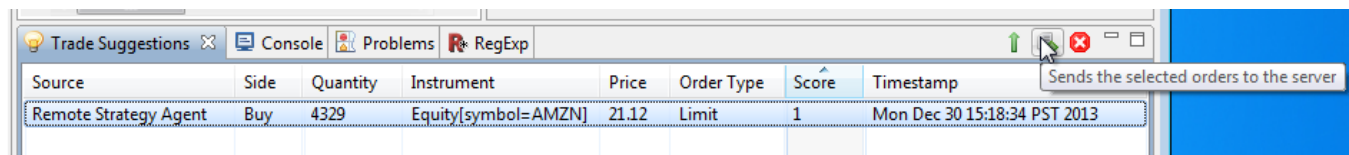


The properties that a strategy expects are particular to that strategy. More on strategy parameters later. When the strategy is ready, start it from the Strategy Engines View popup menu.



Trade Suggestions

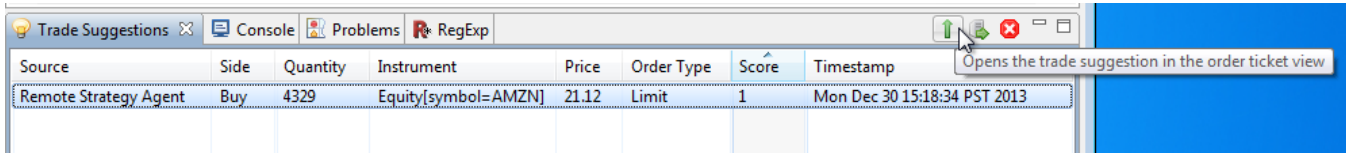
The Trade Suggestions View shows potential trades that a strategy may create. Strategies can send trades directly with no user supervision, or, using the Trade Suggestions View, strategies may suggest trades that are either confirmed or rejected by a user. Rejected trades are discarded, confirmed trades are sent to the server and then to a broker just like a regular trade.



Trade suggestions are assigned a score by the strategy that creates them. The score is simply a value used to create a preference order for the user approving them and represent anything you want (scale of 0 to 1, 1 to 10,000, whatever). We'll get in to strategy coding in more detail later, but here's the snippet that created this trade suggestion:

```
OrderSingle order = Factory.getInstance().createOrderSingle();
order.setOrderType(OrderType.Limit);
order.setPrice(inBid.getPrice());
order.setQuantity(inBid.getSize());
order.setSide(Side.Buy);
order.setInstrument(inBid.getInstrument());
order.setTimeInForce(TimeInForce.Day);
suggestTrade(order, BigDecimal.ONE, "Suggested Trade");
```

You can also open the suggestion in the appropriate Order Ticket View for further modification:



Source	Side	Quantity	Instrument	Price	Order Type	Score	Timestamp
Remote Strategy Agent	Buy	4329	Equity[symbol=AMZN]	21.12	Limit	1	Mon Dec 30 15:18:34 PST 2013